

Hamilton County Solid Waste Management District

# School Recycling Assistance Program (RAP)

## Gold Level

### Fact and Information Sheet

Are you a school administrator concerned about solid waste disposal costs? Are you a recycling-conscious teacher or student? The Hamilton County Solid Waste Management District (District) wants to help your school set up a new solid waste reduction/recycling program or expand your existing program.

A representative from the District can come to your school and meet with principals, teachers, students, facility managers, custodians, and PTAs to help you assess your school's waste stream and determine what program is right for your school. The District can also help you design your collection method to have a minimal impact on custodians; educate staff, students, and parents; and generate school pride and enthusiasm for the program.

Once you have committed to starting a program, completed the RAP Registration Form and Individual School Recycling Plan, the District can provide the following services:

- Free teacher training and curricula aligned with state standards
- Free indoor recycling containers
- Free classroom presentations
- Free school assemblies
- Free solid waste related field trips
- Free student incentives
- Free recycling consultation services
- And more!

#### RAP features two levels of membership:

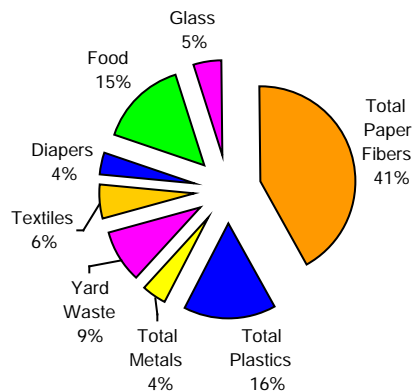
##### Silver Level

- Technical assistance
- Supplies
- SWMD staff presentations
- PTA, kick-offs, staff meetings
- Teacher trainings
- Grants

##### Gold Level

- All of the above, plus:
- Field trips
- Contracted presentations

To register, contact the Education Specialist at (513) 946-7736. Completed applications may be faxed to (513) 946-7779.



#### Did you know?

Paper makes up 41% of Ohio's waste stream by weight and 44% by volume.

Statewide Distribution of Major Components or Categories by Weight



Please answer the following questions to the best of your ability. This is the starting point for establishing an efficient and sustainable recycling program on your campus. The District will work with your recycling team during the school year to complete the plan.

- Where do you want the outdoor recycling container(s) placed? If already placed, is this location convenient for volunteers and staff?
- What items will be or are collected for recycling? Identify your recycling service hauler for each item (i.e., Abibiti, Recovered Resources, CSI, Rumpke, 3R Recycling, volunteer, etc.)

<u>Item Collected</u>	<u>Hauler</u>	<u>Item Collected</u>	<u>Hauler</u>
Mixed Paper	_____	Inkjet/Laser Cartridges	_____
Corrugated Cardboard	_____	Single-stream (comingled)	_____
Aluminum Cans	_____	Cell Phones	_____
Yardwaste (composting)	_____	Vermicomposting (worm bin)	_____
Plastic Bags	_____	Other	_____

- If you participate in single-stream recycling, can you afford the monthly hauling service fee for recycling? (Single-stream recycling allows you to co-mingle mixed paper, corrugated cardboard, plastics #1 and #2, steel, aluminum, and glass.) If not, are you prepared to raise funds, write a grant, or haul it yourself?
- Will the school cafeteria and building engineering staff participate?
- Describe your collection method. Who will transfer the material from the classrooms/cafeteria to the outside recycling container? How often?
- Do you need indoor collection containers? How many (number of classrooms, offices, etc.) do you need? What type?
- How will you prevent the recycling containers from becoming contaminated with trash? How will you ensure that the campus community, parents, and neighborhood is well informed about the recycling program?
- How will you involve students in the recycling/waste diversion efforts? **(Gold level only)**

- Does your school have a recycling or environmental club? If not, would you like to start one? (**Gold Level only**)
  
- Please list the ideas you are considering to kick-off the program and for ongoing education and marketing efforts. Complete the time line worksheet (Attachment A) for major and minor promotional events. (**Gold Level only**)
  
- Who is your current waste hauler (garbage going to landfill)? Does your waste hauler offer recycling?  
What size and how many dumpster(s) do you have (2, 6, or 8 cubic yard capacity)? \_\_\_\_\_  
How often are they serviced per week? \_\_\_\_\_
  
- Have you done a waste audit? If not, we are available to assist you.
  
  
- Additional comments or unique challenges you anticipate at your school.

**This page must be completed by all Gold Level schools**

2009- 2010

Recycling Assistance Program  
Promotion and Education Timeline Worksheet

Month	Date	Activities	Target Audience	Activity Description	Person Responsible
August					
September					
October					
November					
December					
January					
February					
March					
April					
May					
June					