

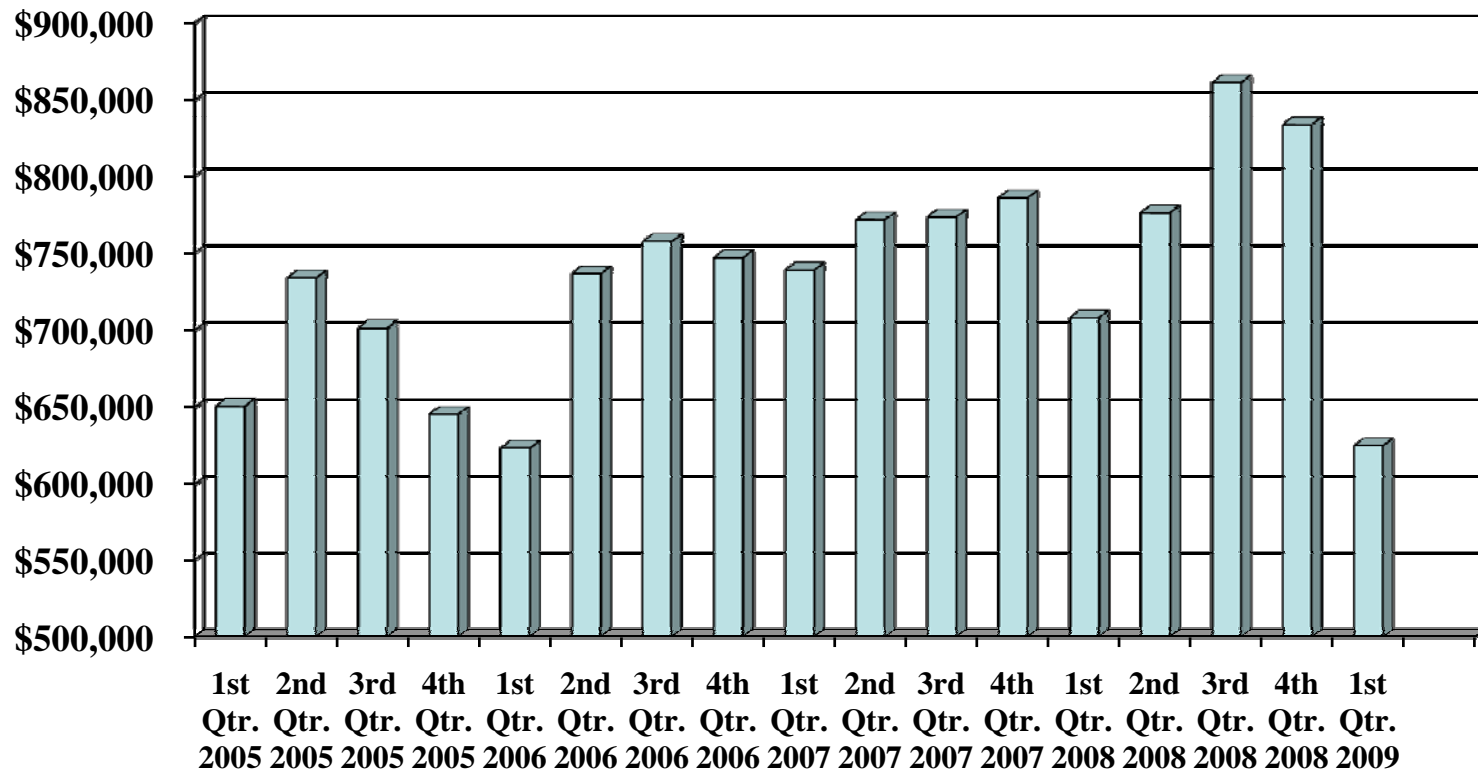
2009 Tipping Fee Receipts

*Rumpke '09	In District	Out of District	Out of State	Total Tonnage	Total Dollars	Quarterly Tons	Quarterly \$\$
Jan	0.00	0.00	0.00	0.00	\$0.00		
Feb	0.00	0.00	0.00	0.00	\$0.00		
Mar	0.00	0.00	0.00	0.00	\$0.00	0.00	\$0.00
Apr				0.00	\$0.00		
May				0.00	\$0.00		
Jun				0.00	\$0.00	0.00	\$0.00
Jul				0.00	\$0.00		
Aug				0.00	\$0.00		
Sep				0.00	\$0.00	0.00	\$0.00
Oct				0.00	\$0.00		
Nov				0.00	\$0.00		
Dec				0.00	\$0.00	0.00	\$0.00
Total	0.00	0.00	0.00	0.00	0.00	0.00	0.00
*Bond Road Landfill							
Rumpke '09	In District	Out of District	Out of State	Total Tonnage	Total Dollars	Quarterly Tons	Quarterly \$\$
Jan	59,207.03	71,418.35	7,645.99	138,271.37	\$209,689.72		
Feb	58,196.33	63,183.46	8,565.99	129,945.78	\$193,129.24		
Mar	64,744.01	71,983.81	13,067.88	149,795.70	\$221,779.51	418,012.85	\$624,598.47
Apr				0.00	\$0.00		
May				0.00	\$0.00		
Jun				0.00	\$0.00	0.00	\$0.00
Jul				0.00	\$0.00		
Aug				0.00	\$0.00		
Sep				0.00	\$0.00	0.00	\$0.00
Oct				0.00	\$0.00		
Nov				0.00	\$0.00		
Dec				0.00	\$0.00	0.00	\$0.00
Total	182,147.37	206,585.62	29,279.86	418,012.85	\$624,598.47	418,012.85	\$624,598.47
Grand Totl	182,147.37	206,585.62	29,279.86	418,012.85	\$624,598.47	418,012.85	\$624,598.47
% of Total tonnage dollars	Tier 1	Tier 2	Tier 3				
	43.57%	49.42%	7.00%				
	29.16%	66.15%	4.69%				

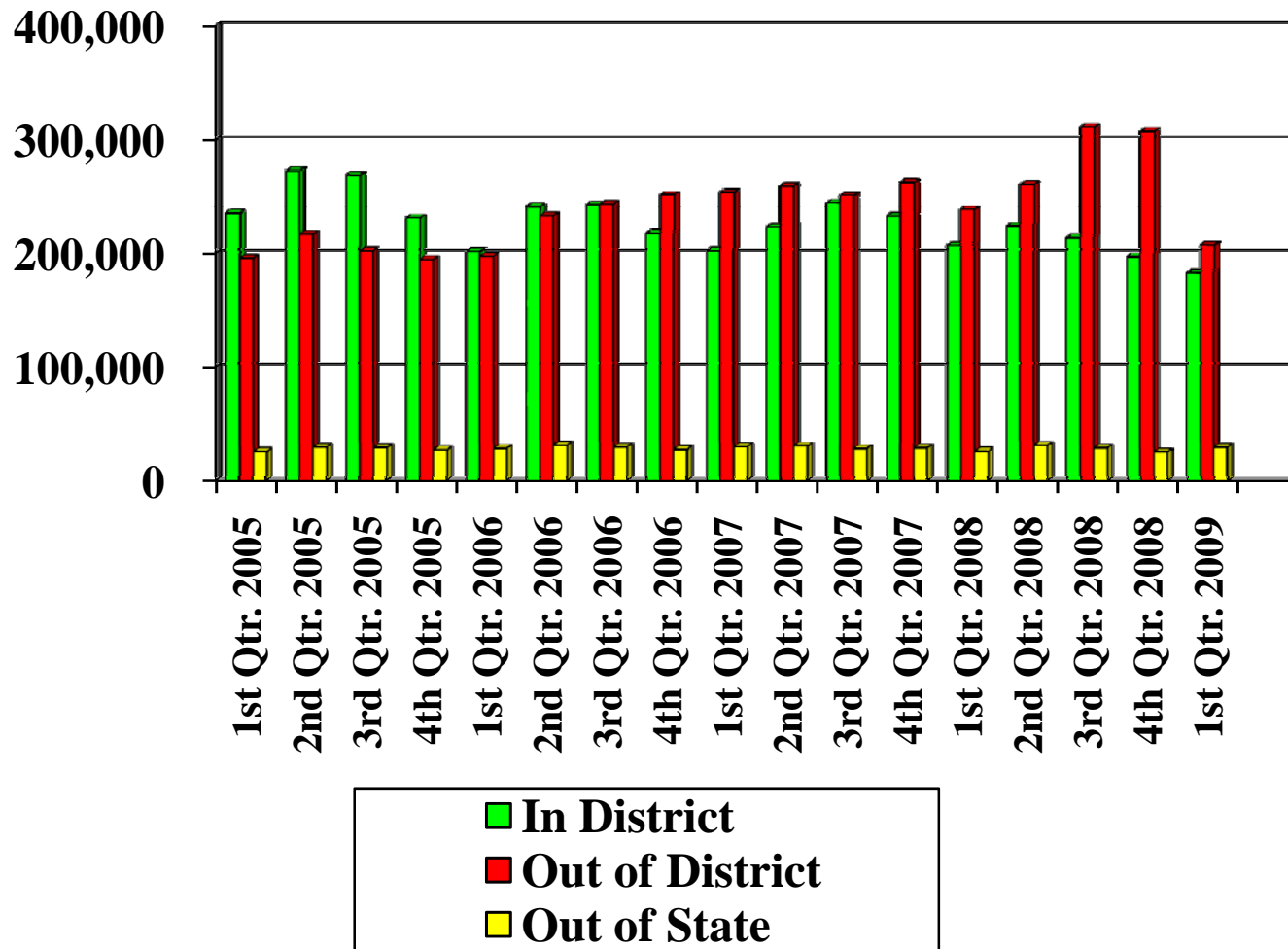
2008 Tipping Fee Receipts

*Rumpke '08	In District	Out of District	Out of State	Total Tonnage	Total Dollars	Quarterly Tons	Quarterly \$\$
Jan	0.00	0.00	0.00	0.00	\$0.00		
Feb	0.00	0.00	0.00	0.00	\$0.00		
Mar	0.00	0.00	0.00	0.00	\$0.00	0.00	\$0.00
Apr				0.00	\$0.00		
May				0.00	\$0.00		
Jun				0.00	\$0.00	0.00	\$0.00
Jul				0.00	\$0.00		
Aug				0.00	\$0.00		
Sep				0.00	\$0.00	0.00	\$0.00
Oct				0.00	\$0.00		
Nov				0.00	\$0.00		
Dec				0.00	\$0.00	0.00	\$0.00
Total	0.00	0.00	0.00	0.00	0.00	0.00	0.00
*Bond Road Landfill							
Rumpke '08	In District	Out of District	Out of State	Total Tonnage	Total Dollars	Quarterly Tons	Quarterly \$\$
Jan	72,202.46	79,311.63	8,846.48	160,360.57	\$239,672.20		
Feb	64,613.07	73,007.28	8,226.00	145,846.35	\$218,853.63		
Mar	69,415.21	85,548.02	8,894.17	163,857.40	\$249,405.42	470,064.32	\$707,931.25
Apr				0.00	\$0.00		
May				0.00	\$0.00		
Jun				0.00	\$0.00	0.00	\$0.00
Jul				0.00	\$0.00		
Aug				0.00	\$0.00		
Sep				0.00	\$0.00	0.00	\$0.00
Oct				0.00	\$0.00		
Nov				0.00	\$0.00		
Dec				0.00	\$0.00	0.00	\$0.00
Total	206,230.74	237,866.93	25,966.65	470,064.32	\$707,931.25	470,064.32	\$707,931.25
Grand Ttl	206,230.74	237,866.93	25,966.65	470,064.32	\$707,931.25	470,064.32	\$707,931.25
% of Total tonnage dollars	Tier 1	Tier 2	Tier 3				
	43.87%	50.60%	5.52%				
	29.13%	67.20%	3.67%				

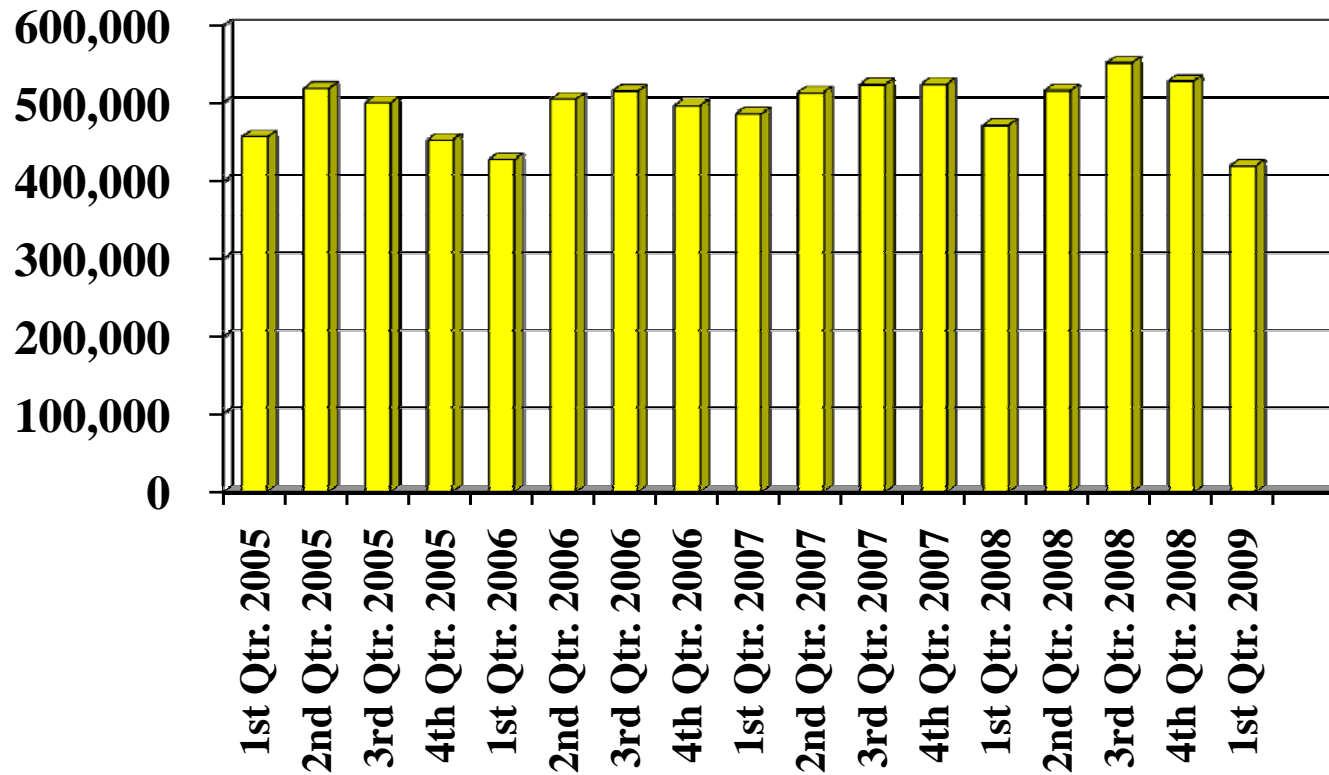
District Revenue by Quarter from 2005 to 2009



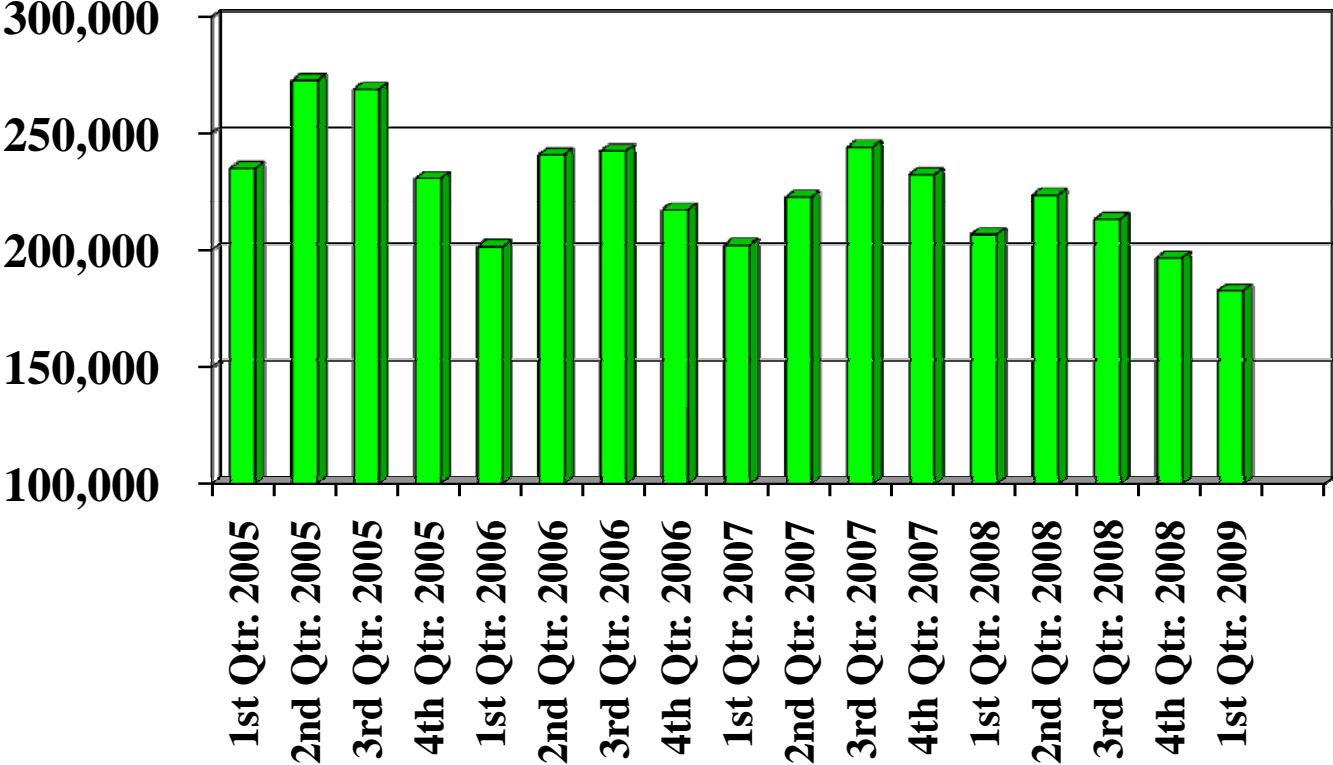
Total Tonnage by Quarter from 2005 to 2009



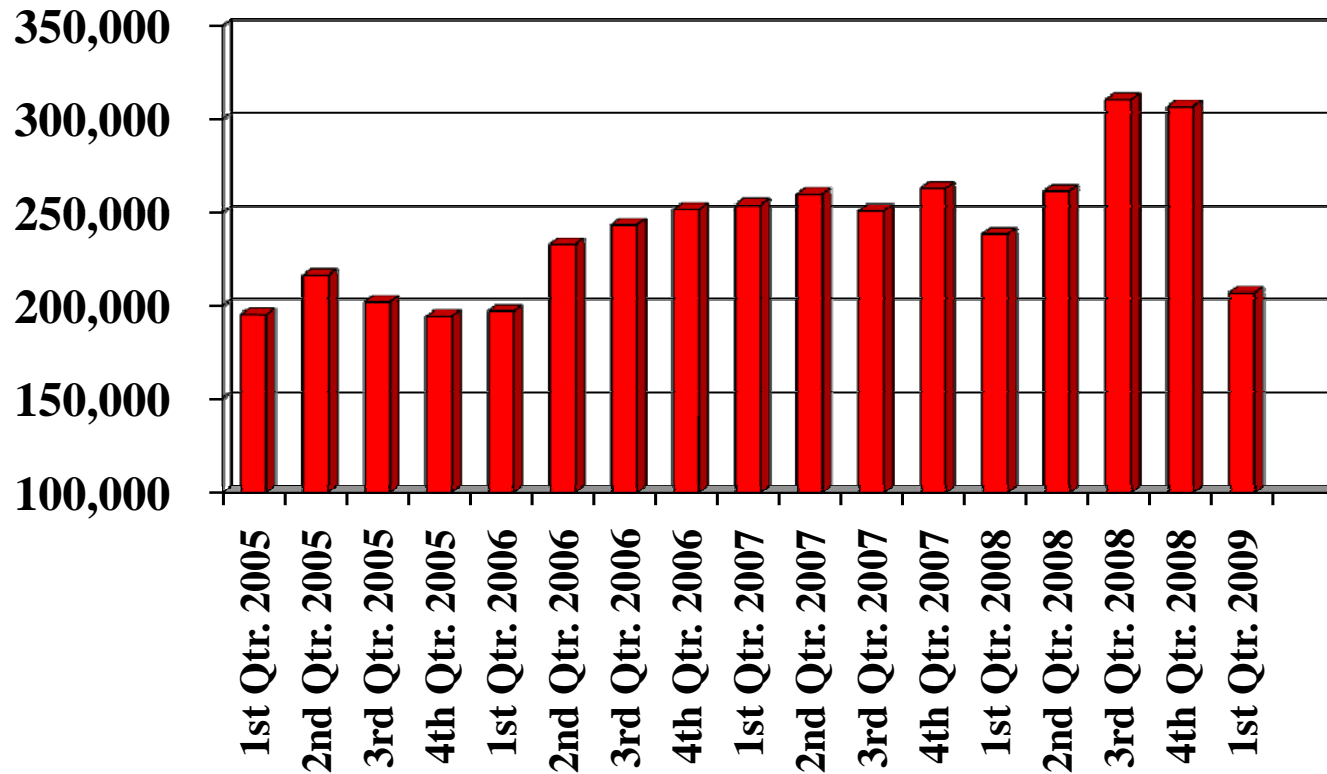
Total Tonnage by Quarter from 2005 to 2009



In-District Tonnage by Quarter from 2005 to 2009



Out-of-District Tonnage by Quarter from 2005 to 2009



Out-of-State Tonnage by Quarter from 2005 to 2009

