

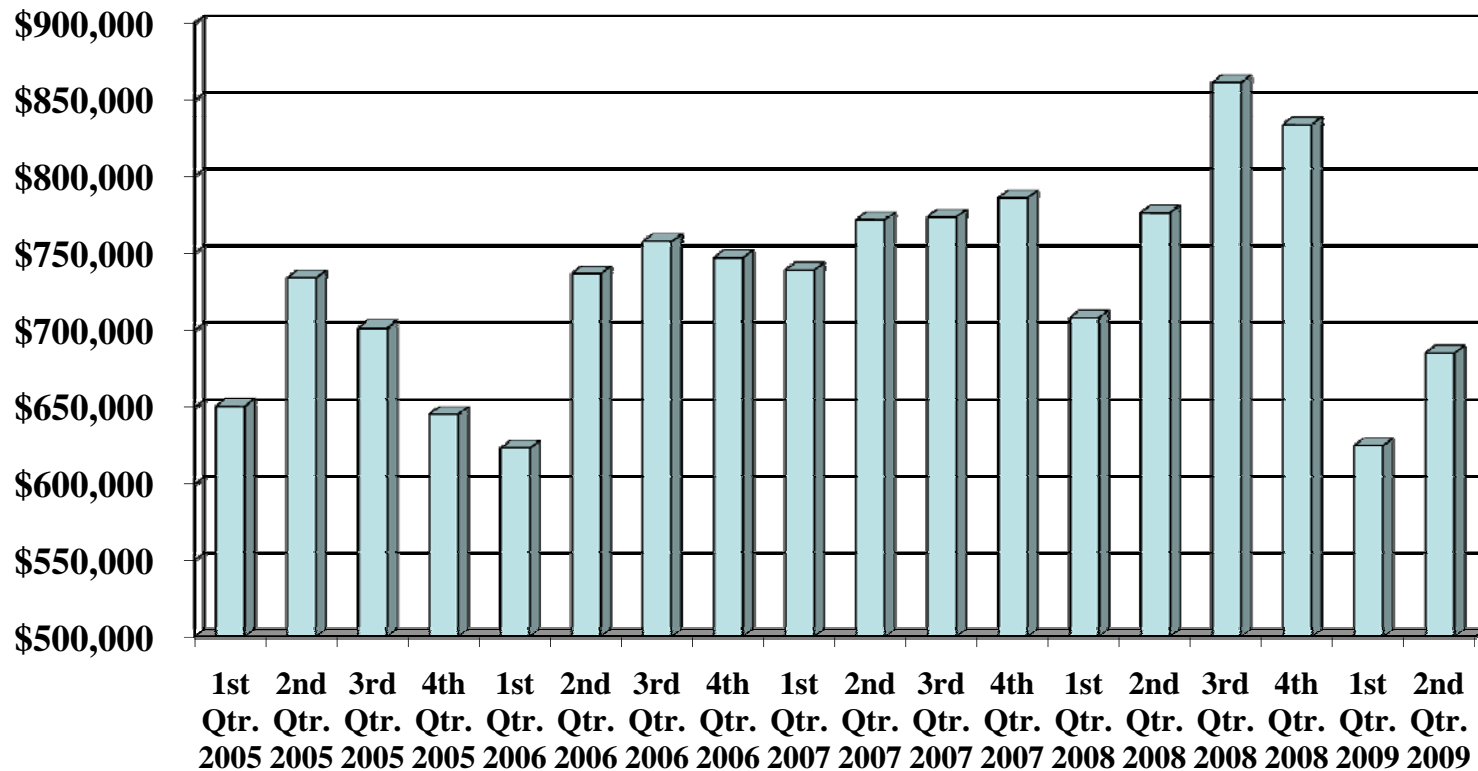
2009 Tipping Fee Receipts

*Rumpke '09	In District	Out of District	Out of State	Total Tonnage	Total Dollars	Quarterly Tons	Quarterly \$\$
Jan	0.00	0.00	0.00	0.00	\$0.00		
Feb	0.00	0.00	0.00	0.00	\$0.00		
Mar	0.00	0.00	0.00	0.00	\$0.00	0.00	\$0.00
Apr	0.00	0.00	0.00	0.00	\$0.00		
May	0.00	0.00	0.00	0.00	\$0.00		
Jun	0.00	0.00	11.23	11.23	\$11.23	11.23	\$11.23
Jul	2.02	0.00	8.08	10.10	\$10.10		
Aug				0.00	\$0.00		
Sep				0.00	\$0.00	10.10	\$10.10
Oct				0.00	\$0.00		
Nov				0.00	\$0.00		
Dec				0.00	\$0.00	0.00	\$0.00
Total	2.02	0.00	19.31	21.33	21.33	21.33	21.33
*Bond Road Landfill							
Rumpke '09	In District	Out of District	Out of State	Total Tonnage	Total Dollars	Quarterly Tons	Quarterly \$\$
Jan	59,207.03	71,418.35	7,645.99	138,271.37	\$209,689.72		
Feb	58,196.33	63,183.46	8,565.99	129,945.78	\$193,129.24		
Mar	64,744.01	71,983.81	13,067.88	149,795.70	\$221,779.51	418,012.85	\$624,598.47
Apr	64,421.92	72,688.82	9,873.91	146,984.65	\$219,673.47		
May	66,633.92	74,427.82	9,840.53	150,902.27	\$225,330.09		
Jun	71,300.15	79,325.78	9,881.46	160,507.39	\$239,833.17	458,394.31	\$684,836.73
Jul	67,555.56	79,156.50	10,102.56	156,814.62	\$235,971.12		
Aug				0.00	\$0.00		
Sep				0.00	\$0.00	156,814.62	\$235,971.12
Oct				0.00	\$0.00		
Nov				0.00	\$0.00		
Dec				0.00	\$0.00	0.00	\$0.00
Total	452,058.92	512,184.54	68,978.32	1,033,221.78	\$1,545,406.32	1,033,221.78	\$1,545,406.32
Grand Totl	452,060.94	512,184.54	68,997.63	1,033,243.11	\$1,545,427.65	1,033,243.11	\$1,545,427.65
% of Total tonnage dollars	Tier 1	Tier 2	Tier 3				
	43.75%	49.57%	6.68%				
	29.25%	66.28%	4.46%				

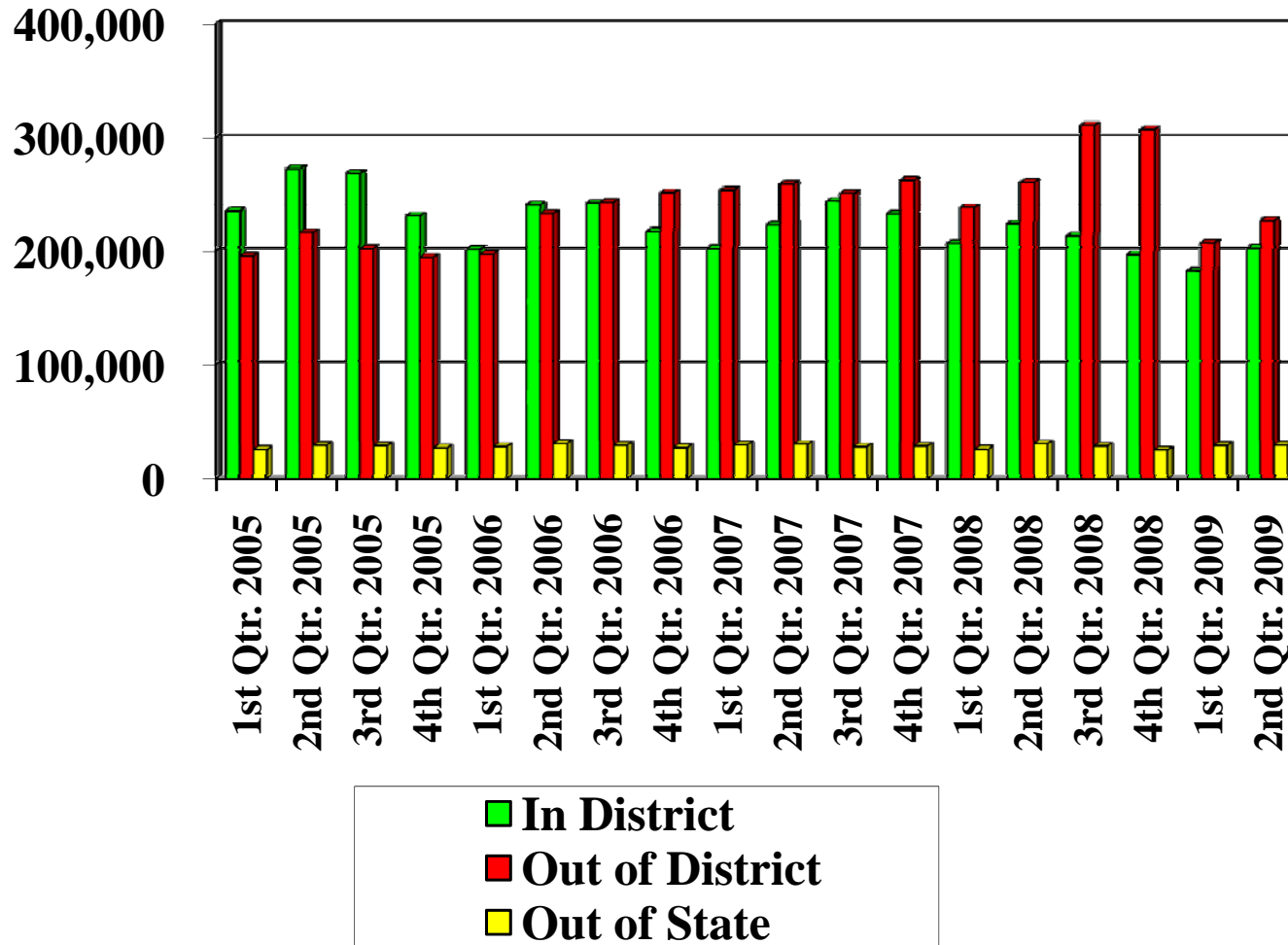
2008 Tipping Fee Receipts

*Rumpke '08	In District	Out of District	Out of State	Total Tonnage	Total Dollars	Quarterly Tons	Quarterly \$\$
Jan	0.00	0.00	0.00	0.00	\$0.00		
Feb	0.00	0.00	0.00	0.00	\$0.00		
Mar	0.00	0.00	0.00	0.00	\$0.00	0.00	\$0.00
Apr	0.00	0.00	0.00	0.00	\$0.00		
May	0.00	0.00	0.00	0.00	\$0.00		
Jun	0.00	0.00	14.53	14.53	\$14.53	14.53	\$14.53
Jul	0.00	0.00	11.06	11.06	\$11.06		
Aug				0.00	\$0.00		
Sep				0.00	\$0.00	11.06	\$11.06
Oct				0.00	\$0.00		
Nov				0.00	\$0.00		
Dec				0.00	\$0.00	0.00	\$0.00
Total	0.00	0.00	25.59	25.59	25.59	25.59	25.59
*Bond Road Landfill							
Rumpke '08	In District	Out of District	Out of State	Total Tonnage	Total Dollars	Quarterly Tons	Quarterly \$\$
Jan	72,202.46	79,311.63	8,846.48	160,360.57	\$239,672.20		
Feb	64,613.07	73,007.28	8,226.00	145,846.35	\$218,853.63		
Mar	69,415.21	85,548.02	8,894.17	163,857.40	\$249,405.42	470,064.32	\$707,931.25
Apr	74,187.37	88,434.52	10,001.11	172,623.00	\$261,057.52		
May	78,194.55	88,776.06	11,136.76	178,107.37	\$266,883.43		
Jun	71,236.70	83,634.56	9,553.55	164,424.81	\$248,059.37	515,155.18	\$776,000.32
Jul	72,620.24	85,119.32	10,202.60	167,942.16	\$253,061.48		
Aug				0.00	\$0.00		
Sep				0.00	\$0.00	167,942.16	\$253,061.48
Oct				0.00	\$0.00		
Nov				0.00	\$0.00		
Dec				0.00	\$0.00	0.00	\$0.00
Total	502,469.60	583,831.39	66,860.67	1,153,161.66	\$1,736,993.05	1,153,161.66	\$1,736,993.05
Grand Totl	502,469.60	583,831.39	66,860.67	1,153,161.66	\$1,737,018.64	1,153,161.66	\$1,737,018.64
% of Total tonnage dollars	Tier 1	Tier 2	Tier 3				
	43.57%	50.63%	5.80%				
	28.93%	67.22%	3.85%				

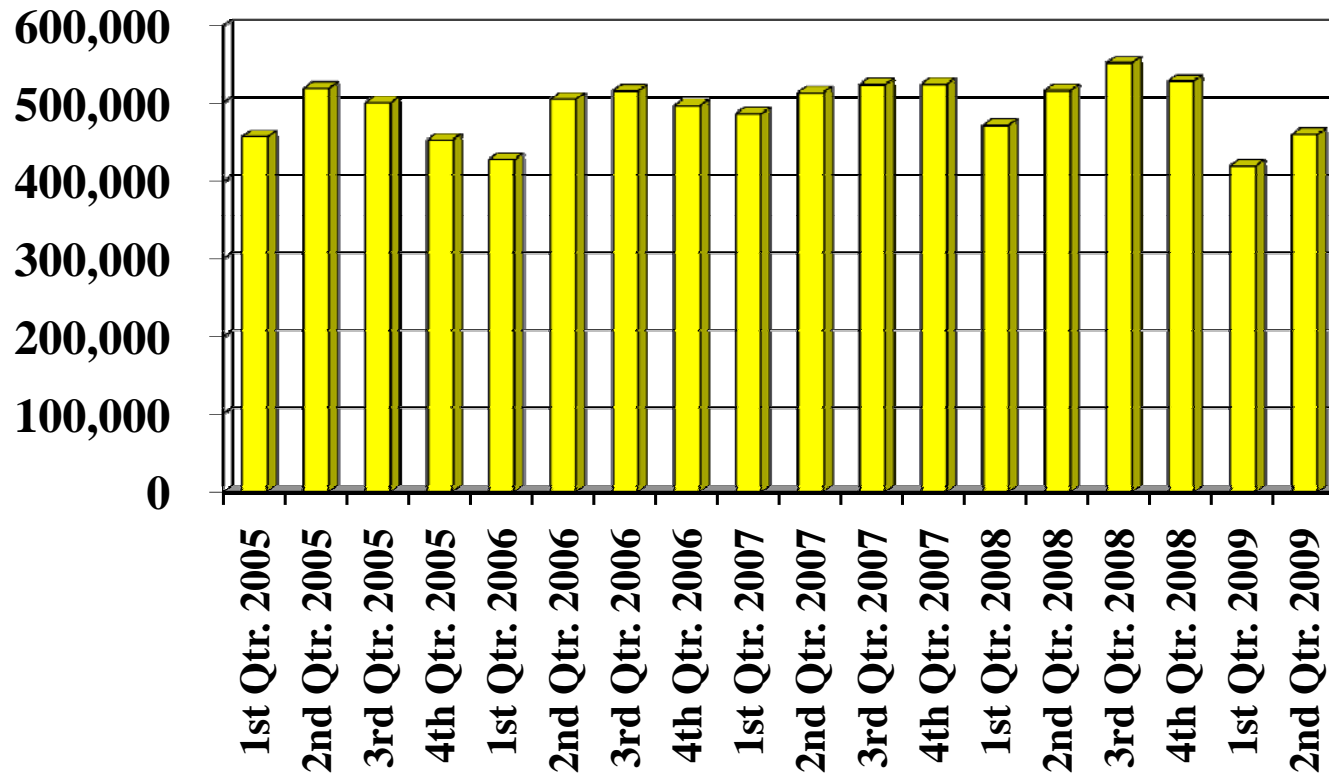
District Revenue by Quarter from 2005 to 2009



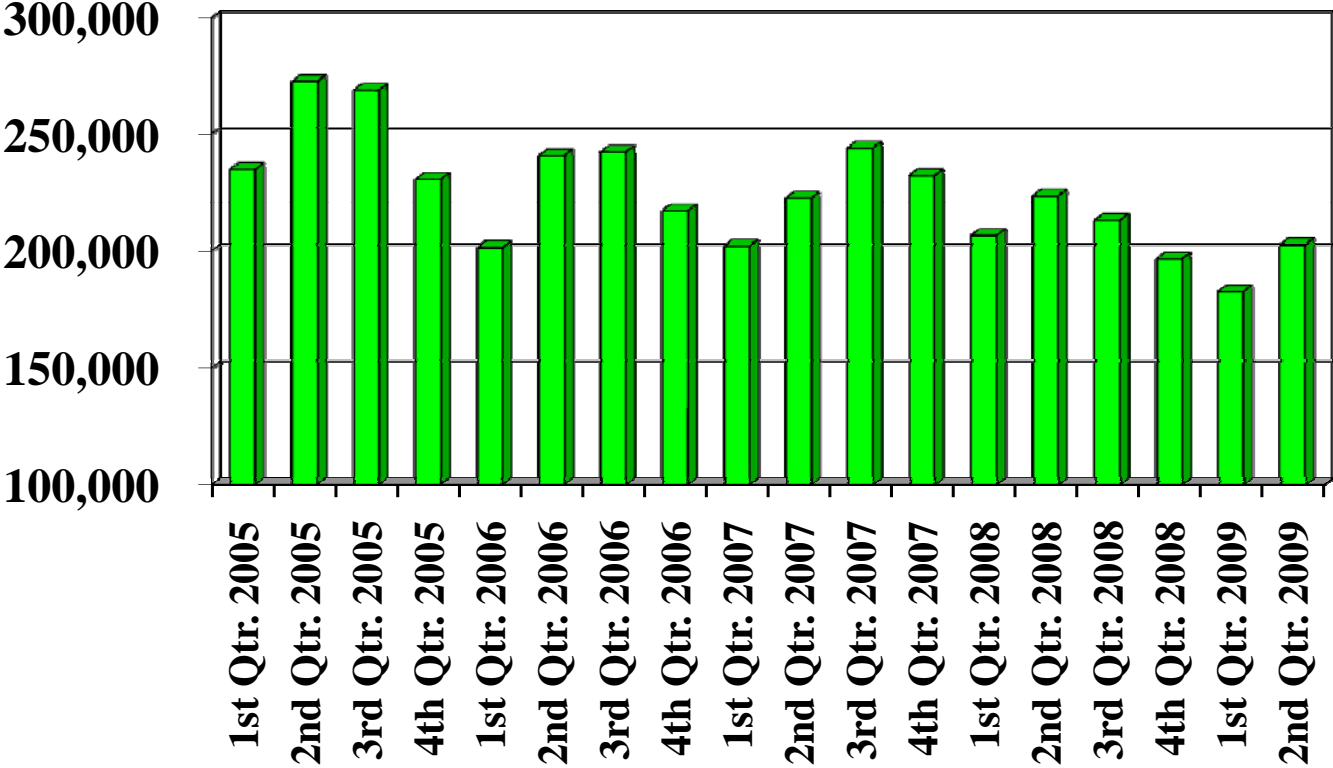
Total Tonnage by Quarter from 2005 to 2009



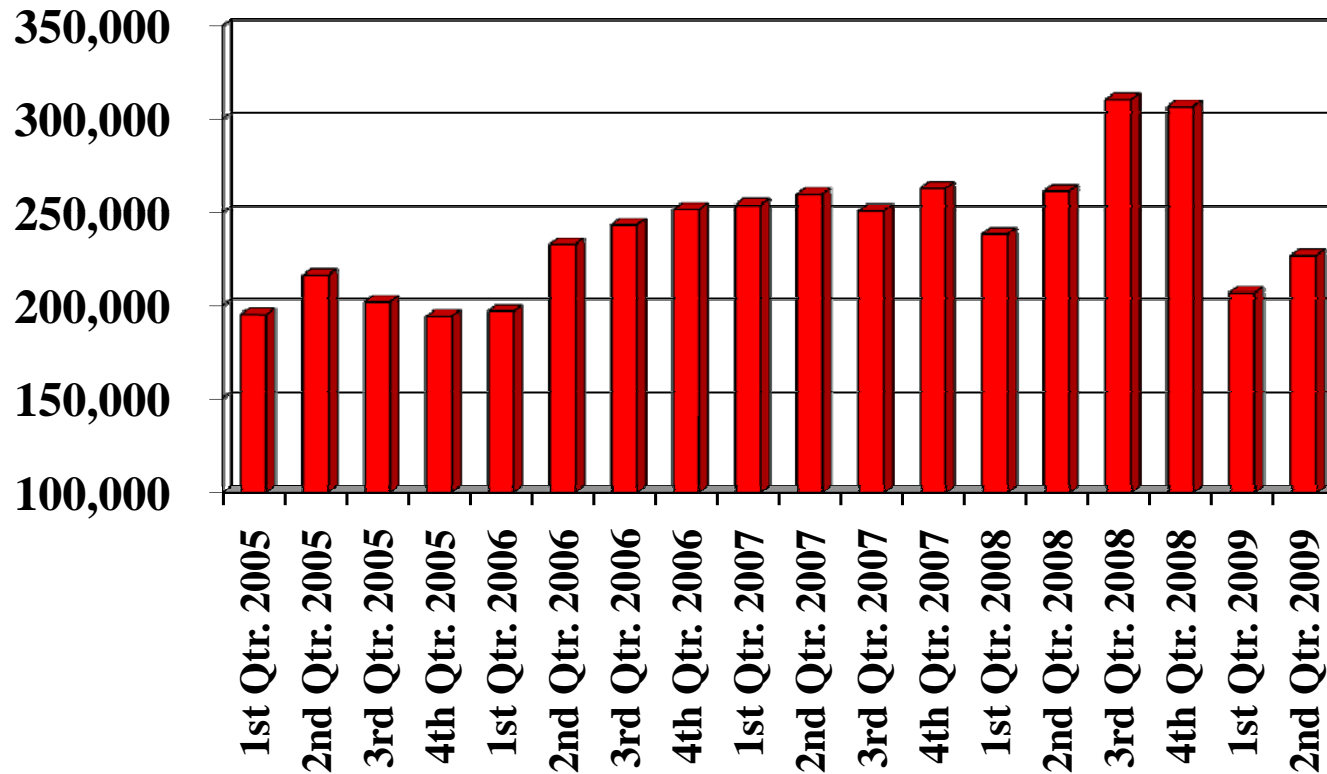
Total Tonnage by Quarter from 2005 to 2009



In-District Tonnage by Quarter from 2005 to 2009



Out-of-District Tonnage by Quarter from 2005 to 2009



Out-of-State Tonnage by Quarter from 2005 to 2009

