



The Cost of Idling

An idling car does not perform at full capacity, which can lead to expensive repairs. Some problems include:

- Oil contamination due to residue build-up on the cylinders.
- Corrosion caused by excessive condensation collected in the exhaust system.
- Decreased peak engine operating temperature due to spark plug residue.

An idling vehicle gets the worst gas mileage possible – 0 miles per gallon. According to the U.S. Department of Energy, if 145 million passenger vehicles idle for five minutes a day, approximately four million gallons of gasoline are consumed. As gas prices rise, not idling a vehicle is a quick and easy way to save money at the pump.

What Can You Do?

- **Turn off your car** – the seconds you take to turn off your car are worth the savings to your health and wallet.
- **Take the bus** – you won't have any car to idle.
- **Plan accordingly** – being on time means less time waiting in your car.
- **Don't use a remote starter** – these starters encourage excessive idling.
- **Drive to warm up** – if you must warm up your car, idle for only 30 seconds and then drive off.

About HCES

Hamilton County Environmental Services' (HCES) Air Quality Management Division works with government agencies, businesses, communities and citizens to achieve and maintain healthy air quality for Southwest Ohio.

Because cars are a main source of air pollution in Southwest Ohio, HCES is working to inform citizens in the area about ways they can reduce emissions from vehicles.

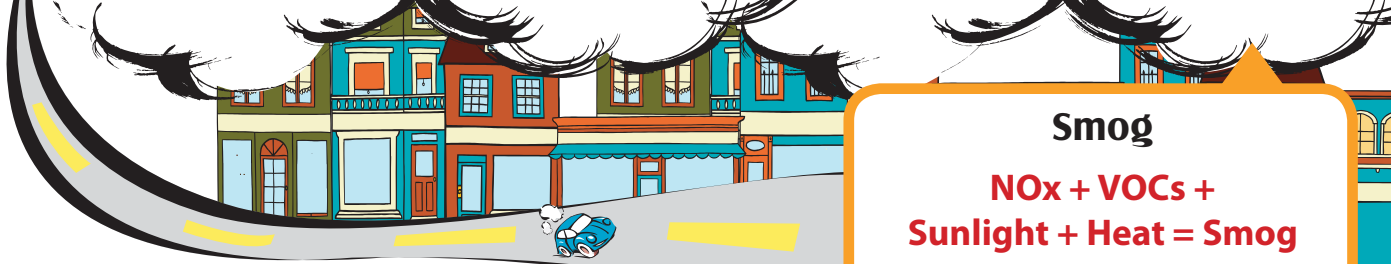
What is HCES Doing?

- Working with schools and bus companies to reduce school bus idling.
- Informing the public through its anti-idling campaign.
- Posting idling facts on www.hcdoes.org.

Start Your Own Anti-Idling Campaign

- Request an anti-idling tool kit from HCES by calling (513) 946 - 7754.
- Ask your school to post anti-idling signs in the bus and student pick up areas.
- Call your local elected officials and let them know that idling is an important issue.
- Encourage your school to set up an indoor area where parents and drivers can wait for students on cold days.
- Visit www.hcdoes.org for links to local anti-idling campaign resources.

To learn more about the anti-idling campaign or any of HCES' programs, please visit www.hcdoes.org or call (513) 946-7777.



Smog

**NOx + VOCs +
Sunlight + Heat = Smog**

NOx can cause or worsen respiratory diseases such as asthma, emphysema and bronchitis. It also combines with water to make acid rain.

Certain VOCs can cause cancer and irritate the respiratory system.

Have You Ever Left Your Car Running While...

- ✓ waiting to pick someone up?
- ✓ running errands?
- ✓ sitting at the drive through?

If you said “yes” to any of these questions, you’ve idled your car. **Idling means** leaving a vehicle’s engine running when it is parked or not in use.

Idling happens without much thought. Many people idle their cars because they think it’s easy, convenient and efficient.

But that’s wrong! **Idling is harmful** to our air quality, our health, our cars and our wallets!

How Idling Affects Air Quality

Cars are the number one source of air pollution in the Greater Cincinnati area. Like driving, idling releases emissions into the air. Unlike driving, idling is unnecessary.

Car exhaust contains:

nitrogen oxides (NOx), volatile organic compounds (VOCs), particulate matter (PM), carbon monoxide (CO) and carbon dioxide (CO₂).

An hour of automobile idling burns approximately 1/5 of a gallon of gas and releases nearly 4 pounds of CO₂ into the air. Excessive amounts of CO₂ in the atmosphere can increase global warming.

An idling car needlessly releases these pollutants into the air. Reducing idling is an easy way to reduce vehicle emissions.

How Idling Affects Your Health

The pollutants found in exhaust not only affect our environment, they also affect our health.

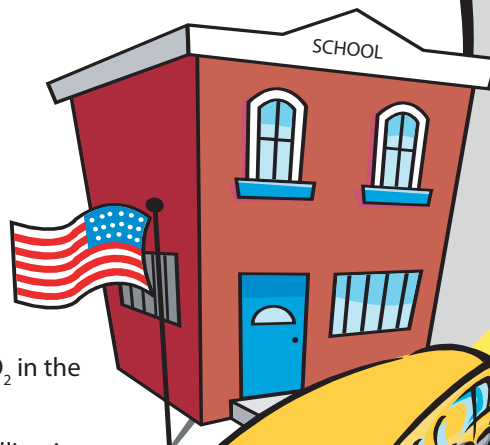
PM is the name for tiny particles, such as soot, dust and dirt, found in the air. When inhaled, these small particles travel deep into the lungs and sometimes into the bloodstream. Inhaling PM can:

- aggravate asthma,
- cause coughing or difficult breathing,
- decrease lung function,
- exacerbate cardiovascular problems and
- lead to chronic bronchitis.

CO slows the delivery of oxygen to the body’s organs and tissues. Exposure to CO aggravates heart disease and can cause headaches and visual impairment.

Children are especially sensitive to the effects air pollution because they breathe more quickly and take in more air than adults.

Children spend more time outdoors than adults, which further increases their exposure to vehicle emissions and air pollution.



Acronym Guide

NOx:	Nitrogen Oxides
VOCs:	Volatile Organic Compounds
PM:	Particulate Matter
CO:	Carbon Monoxide
CO₂:	Carbon Dioxide

