

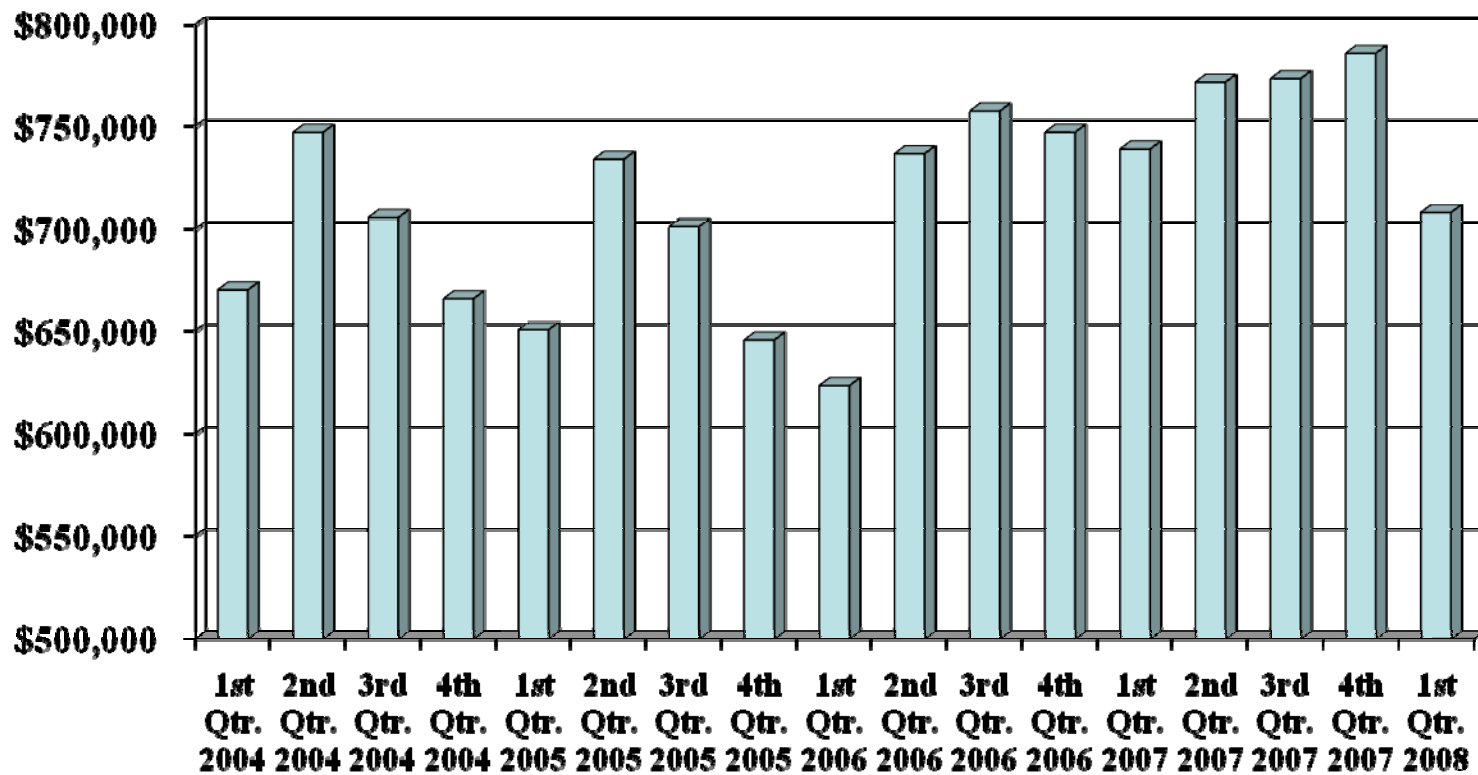
2008 Tipping Fee Receipts

*Rumpke '08	In District	Out of District	Out of State		Total Tonnage	Total Dollars		Quarterly Tons	Quarterly \$\$
Jan	0.00	0.00	0.00		0.00	\$0.00			
Feb	0.00	0.00	0.00		0.00	\$0.00			
Mar	0.00	0.00	0.00		0.00	\$0.00		0.00	\$0.00
Apr					0.00	\$0.00			
May					0.00	\$0.00			
Jun					0.00	\$0.00		0.00	\$0.00
Jul					0.00	\$0.00			
Aug					0.00	\$0.00			
Sep					0.00	\$0.00		0.00	\$0.00
Oct					0.00	\$0.00			
Nov					0.00	\$0.00			
Dec					0.00	\$0.00		0.00	\$0.00
Total	0.00	0.00	0.00		0.00	0.00		0.00	0.00
*Bond Road Landfill									
Rumpke '08	In District	Out of District	Out of State		Total Tonnage	Total Dollars		Quarterly Tons	Quarterly \$\$
Jan	72,202.46	79,311.63	8,846.48		160,360.57	\$239,672.20			
Feb	64,613.07	73,007.28	8,226.00		145,846.35	\$218,853.63			
Mar	69,415.21	85,548.02	8,894.17		163,857.40	\$249,405.42		470,064.32	\$707,931.25
Apr					0.00	\$0.00			
May					0.00	\$0.00			
Jun					0.00	\$0.00		0.00	\$0.00
Jul					0.00	\$0.00			
Aug					0.00	\$0.00			
Sep					0.00	\$0.00		0.00	\$0.00
Oct					0.00	\$0.00			
Nov					0.00	\$0.00			
Dec					0.00	\$0.00		0.00	\$0.00
Total	206,230.74	237,866.93	25,966.65		470,064.32	\$707,931.25		470,064.32	\$707,931.25
Grand Ttl	206,230.74	237,866.93	25,966.65		470,064.32	\$707,931.25		470,064.32	\$707,931.25
<i>% of Total</i>	<i>Tier 1</i>	<i>Tier 2</i>	<i>Tier 3</i>						
<i>tonnage</i>	43.87%	50.60%	5.52%						
<i>dollars</i>	29.13%	67.20%	3.67%						

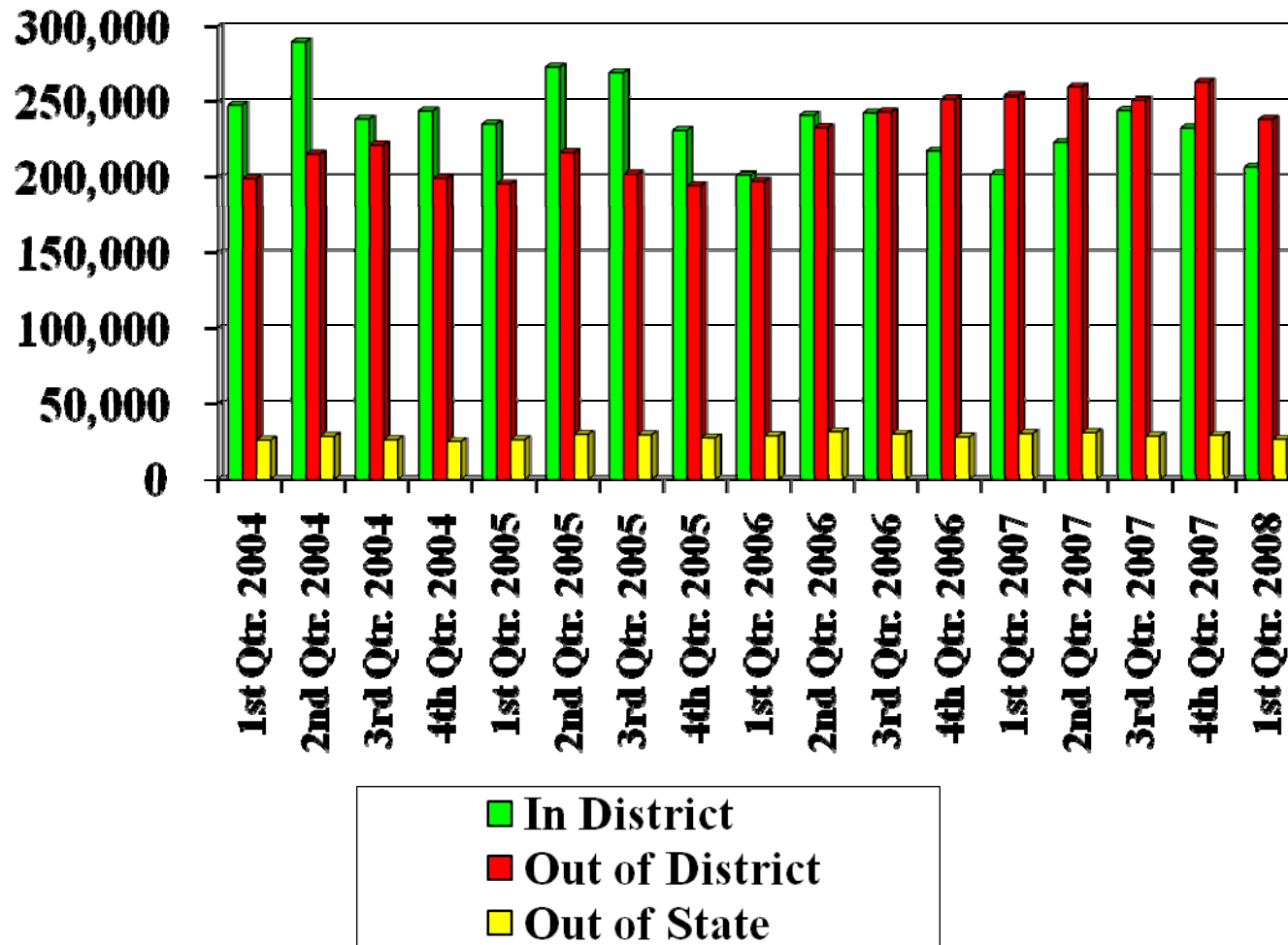
2007 Tipping Fee Receipts

*Rumpke '07	In District	Out of District	Out of State		Total Tonnage	Total Dollars		Quarterly Tons	Quarterly \$\$
Jan	0.00	0.00	0.00		0.00	\$0.00			
Feb	0.00	0.00	0.00		0.00	\$0.00			
Mar	0.00	0.00	0.00		0.00	\$0.00		0.00	\$0.00
Apr					0.00	\$0.00			
May					0.00	\$0.00			
Jun					0.00	\$0.00		0.00	\$0.00
Jul					0.00	\$0.00			
Aug					0.00	\$0.00			
Sep					0.00	\$0.00		0.00	\$0.00
Oct					0.00	\$0.00			
Nov					0.00	\$0.00			
Dec					0.00	\$0.00		0.00	\$0.00
Total	0.00	0.00	0.00		0.00	0.00		0.00	0.00
*Bond Road Landfill									
Rumpke '07	In District	Out of District	Out of State		Total Tonnage	Total Dollars		Quarterly Tons	Quarterly \$\$
Jan	69,028.88	96,452.48	9,153.64		174,635.00	\$271,087.48			
Feb	57,447.04	65,171.11	9,477.93		132,096.08	\$197,267.19			
Mar	75,333.01	91,976.48	11,180.22		178,489.71	\$270,466.19		485,220.79	\$738,820.86
Apr					0.00	\$0.00			
May					0.00	\$0.00			
Jun					0.00	\$0.00		0.00	\$0.00
Jul					0.00	\$0.00			
Aug					0.00	\$0.00			
Sep					0.00	\$0.00		0.00	\$0.00
Oct					0.00	\$0.00			
Nov					0.00	\$0.00			
Dec					0.00	\$0.00		0.00	\$0.00
Total	201,808.93	253,600.07	29,811.79		485,220.79	\$738,820.86		485,220.79	\$738,820.86
Grand Ttl	201,808.93	253,600.07	29,811.79		485,220.79	\$738,820.86		485,220.79	\$738,820.86
<i>% of Total</i>	<i>Tier 1</i>	<i>Tier 2</i>	<i>Tier 3</i>						
<i>tonnage</i>	41.59%	52.26%	6.14%						
<i>dollars</i>	27.32%	68.65%	4.04%						

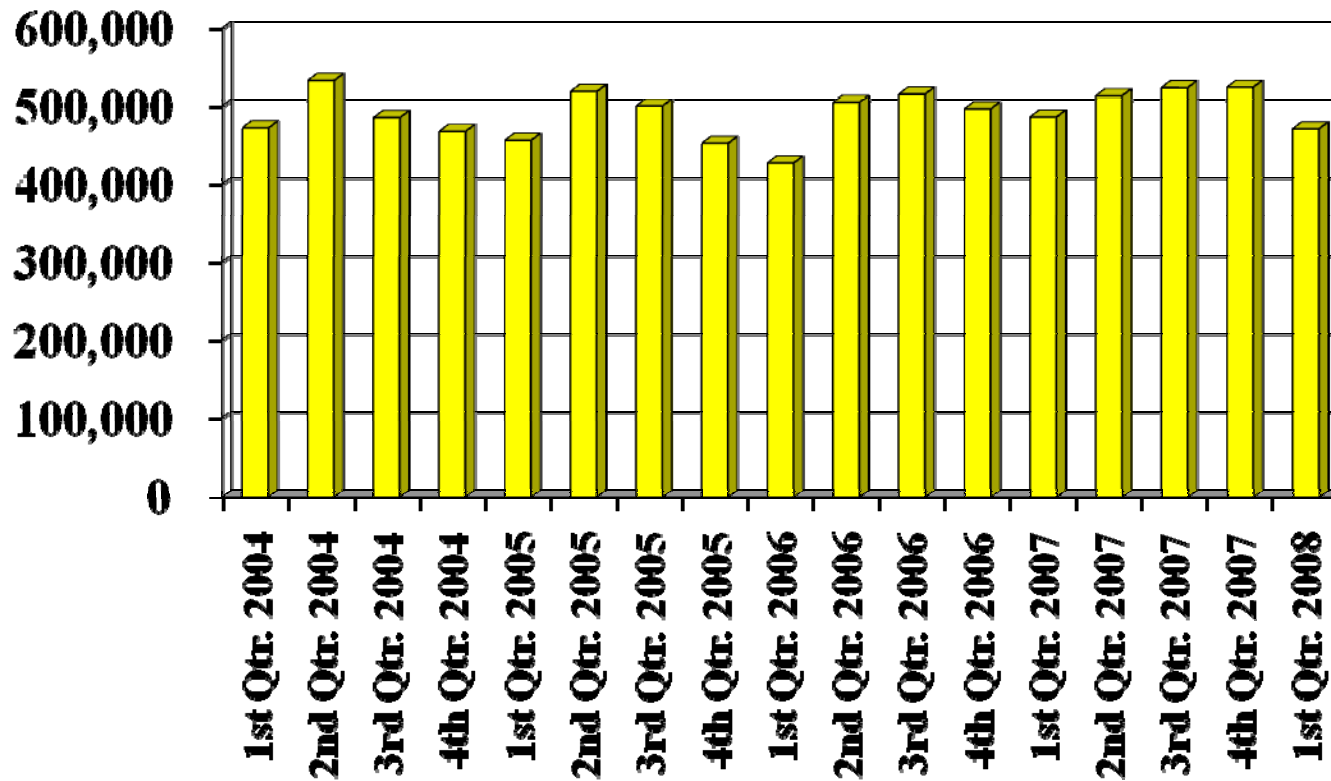
District Revenue by Quarter from 2004 to 2008



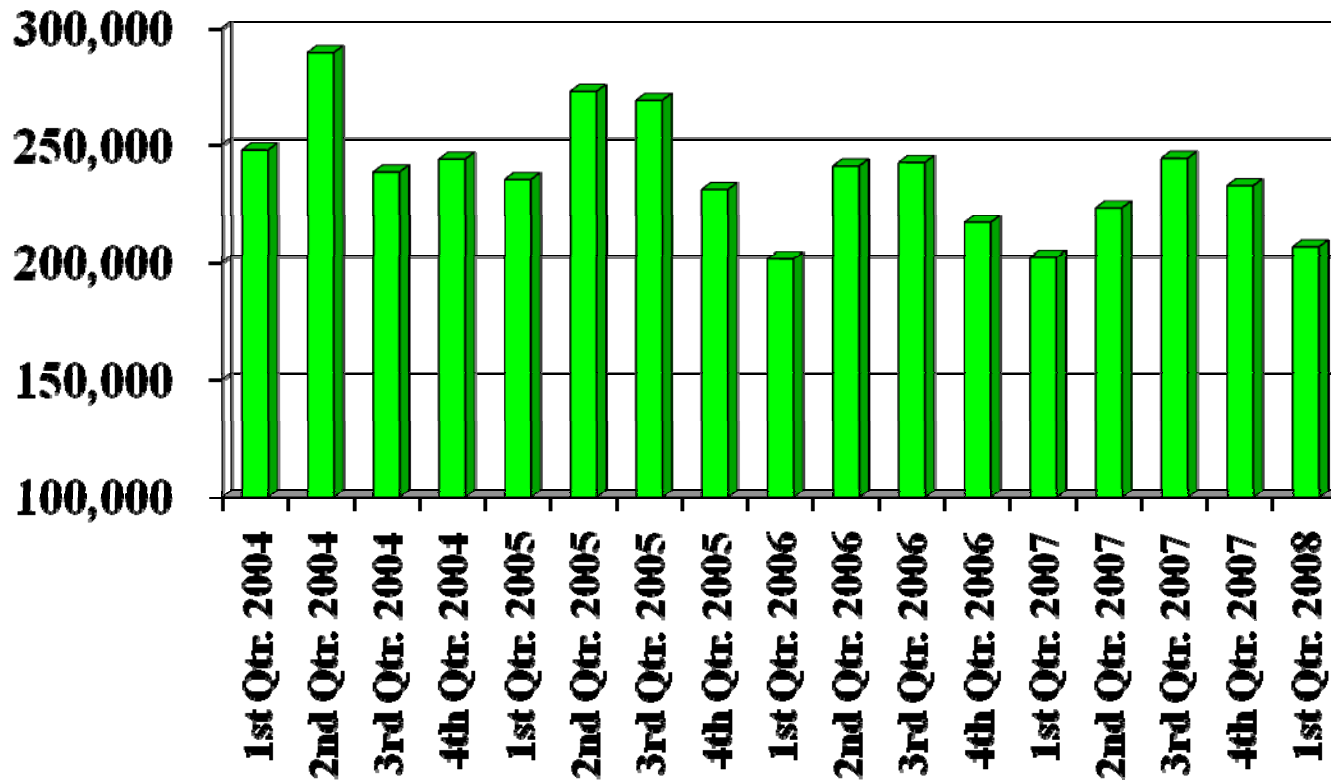
Total Tonnage by Quarter from 2004 to 2008



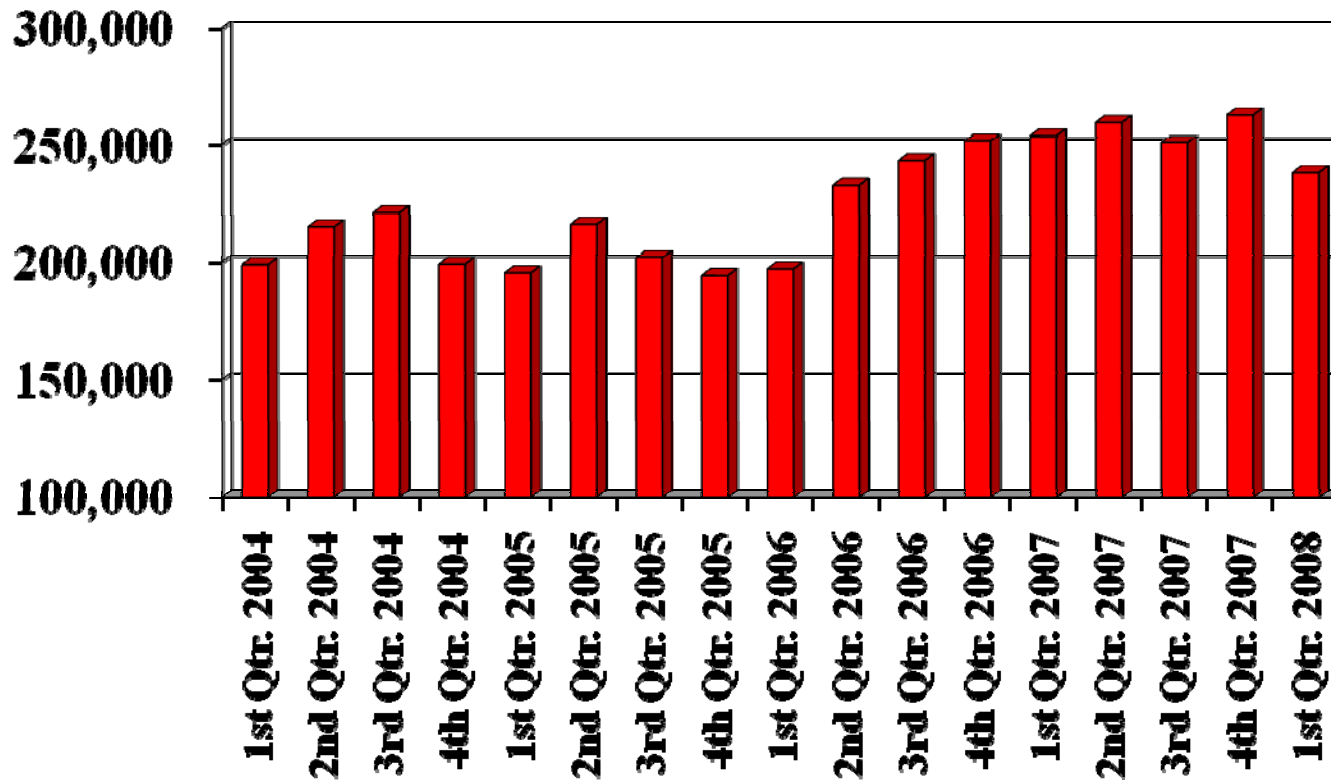
Total Tonnage by Quarter from 2004 to 2008



In-District Tonnage by Quarter from 2004 to 2008



Out-of-District Tonnage by Quarter from 2004 to 2008



Out-of-State Tonnage by Quarter from 2004 to 2008

